



LineIntel

# AI-Assisted Vegetation Risk & Field Reporting

Veteran-Owned | Based in Tennessee & Florida

**Proprietary and Confidential**

This presentation and the information contained herein are the confidential and proprietary property of LineIntel, LLC. It is provided solely for the purpose of evaluating LineIntel's business, services, or technology.

No part of this document may be reproduced, disclosed, or distributed in any form or by any means, in whole or in part, without the prior written consent of LineIntel, LLC. By accepting this document, the recipient agrees to keep the information strictly confidential and to use it only for the purpose for which it was disclosed.

© 2025 LineIntel, LLC. All rights reserved.

# Executive Snapshot

## What We Do

Combine drones, satellites, AI, and arborist validation into a comprehensive vegetation risk platform that transforms how utilities manage their corridors.

## Who It's For

Co-ops, municipal, and IOU's managing thousands of miles of transmission and distribution lines with ever changing vegetation management budgets.

## Why Now

Vegetation is a leading cause of outages and wildfires, with costs rising and regulatory pressure mounting across the industry.

## Where We Are Today

MVP built and tested, actively preparing pilot programs with target utilities.





# The Scale of the Problem

**20%+**

### Vegetation Outages

Most common cause of power disruptions in the United States, affecting millions of customers annually

**18**

### Transmission Events

Sustained outages in 2023 caused by vegetation on transmission lines

**83%**

### Outside ROW

Of vegetation incidents came from trees outside the right-of-way boundary

**\$150B**

### Annual Cost

Total outage costs in the U.S., with ~16% directly tied to vegetation management

Wildfire liability is forcing utilities into multi-billion-dollar mitigation programs, creating an urgent need for smarter risk management solutions.

Sources: DOE 2024, NERC 2023, Public Power Association 2023



# Who We Serve

## Primary Markets

Rural cooperatives with limited vegetation budgets and extensive service territories

Municipal utilities balancing cost control with reliability requirements

## Secondary Markets

Regional IOUs seeking supplemental risk analysis and validation tools



## End Users

Vegetation managers, system operators, certified arborists, line crews, and customers reporting field issues



## Decision Makers

General managers and board members accountable for system reliability, safety compliance, and budget oversight



# Current Market Gaps

## Aerial LiDAR Surveys

Provide detailed vegetation mapping but cost \$50,000-\$200,000 per survey, making them prohibitively expensive for smaller utilities with tight budgets.

## Generic Work Order Systems

Track job completion and labor hours but don't assess vegetation risk or prioritize based on actual threat levels to system reliability.

## Customer Reporting Methods

Phone calls and emails lack precise geolocation data and visual documentation, making it difficult to assess urgency and dispatch appropriate resources.

## The Costly Result

Missed high-risk areas, inefficient trimming cycles, wasted resources, and increased exposure to preventable outages and regulatory violations.



# LineIntel Platform Overview



# Web Platform Features

01

## Interactive Map View

Satellite imagery overlaid with vegetation risk layers, featuring clickable pins for reported issues and color-coded threat levels across the entire service territory.

02

## Work Order Management

Create, assign, filter, and close vegetation management jobs with priority ranking, crew assignments, and completion tracking integrated into existing workflows.

03

## Risk Reporting Suite

AI-generated risk scores combined with historical compliance reports, trend analysis, and regulatory documentation for audit preparedness.

04

## Drone Data Integration

Upload and process orthophotos, compare before-and-after imagery, and track vegetation growth patterns over time for predictive maintenance.

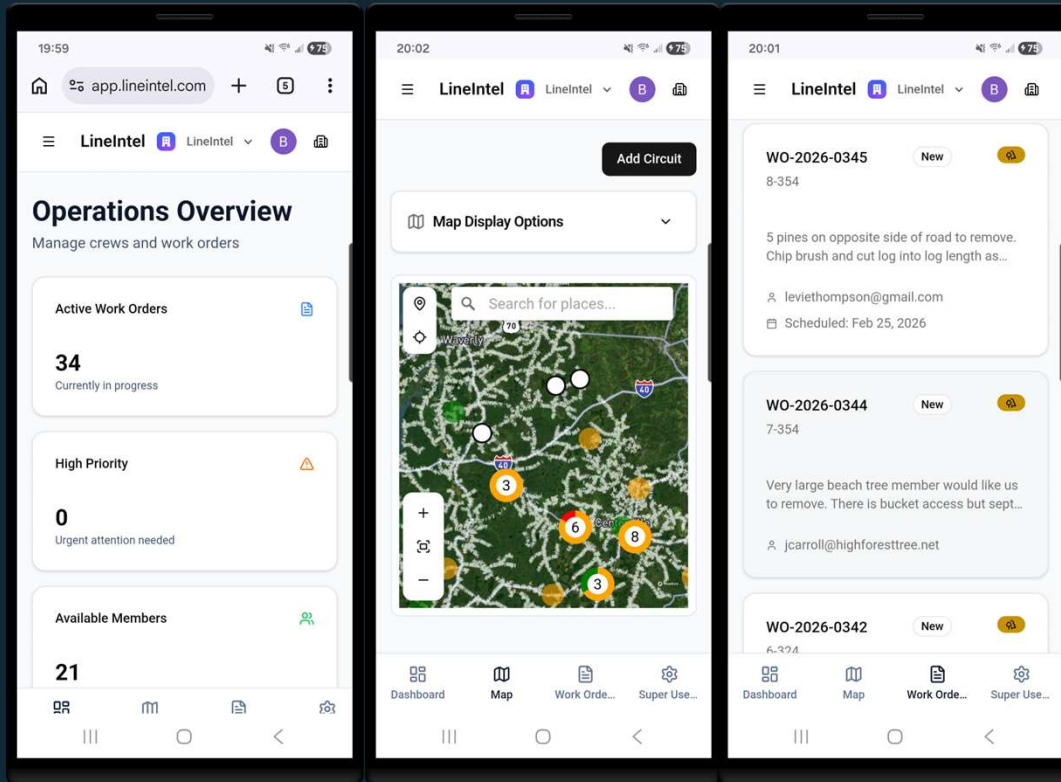
05

## User Management System

Role-based permissions for staff accounts, ensuring appropriate access levels for managers, operators, field crews, and administrative personnel.



# Mobile App Capabilities



## → Issue Reporting

One-tap photo capture with automatic GPS tagging and dropdown menus for issue categorization, streamlining field documentation.

## → Status Tracking

Real-time visibility into report status: "submitted," "work order created," "crew assigned," or "completed" with estimated resolution times.

## → Smart Notifications

Push alerts for power outages, severe weather warnings, job assignments, and completion confirmations targeted to user location and role.

## → Crew Mode

Dedicated interface for field personnel with job assignments, completion checklists, and direct communication with dispatch operations.

## → Offline Functionality

Capture photos and data in remote areas with no cellular service, automatically syncing when connectivity is restored.



# Workflow in Action



## Data Input

Drones, satellites, customer reports, and crew observations feed into our centralized platform



## AI + Arborist Review

Machine learning algorithms detect vegetation risks, validated by certified arborists for accuracy



## Utility Dashboard

Interactive map displays prioritized risk areas with actionable recommendations and threat assessments



## Work Order Generation

System automatically creates prioritized work orders from validated risk pins with crew assignments



## Resolution & Feedback

Field crews complete tasks, update status, and provide feedback that improves future AI predictions



# Implementation Timeline?

1

## Week 0–1: Setup

Upload utility feeder maps, establish user accounts, configure system parameters, and conduct initial staff training sessions.

2

## Week 2–3: Launch

Deliver first comprehensive vegetation risk map overlay and roll out mobile app to customers and field crews with support documentation.

3

## Week 4–5: Integration

Integrate existing drone survey data, validate AI recommendations with arborists, and refine work order generation processes.

4

## Week 6+: Optimization

Comprehensive system review, performance analytics, process refinement, and phased expansion across entire utility service territory.

# Implementation Timeline?

## 1 — Day 1-2: Setup and Launch

- Upload utility feeder maps, establish user accounts, configure system parameters, and conduct initial staff training sessions.
- Deliver first comprehensive vegetation risk map overlay and roll out mobile app to customers and field crews with support documentation.

## 2 — Days 2+: Adoption, Integration, Optimization

- Expanded adoption rate and usage – over 300 work orders and counting
- On-going platform improvements based on user feedback and usage analytics

## 3 — Impact

- Report generation with images – FEMA reimbursement
- Efficiency cut days off outages for over 18k customers
- Out of town crews were easily managed – navigating rural TN

# Key Performance Index



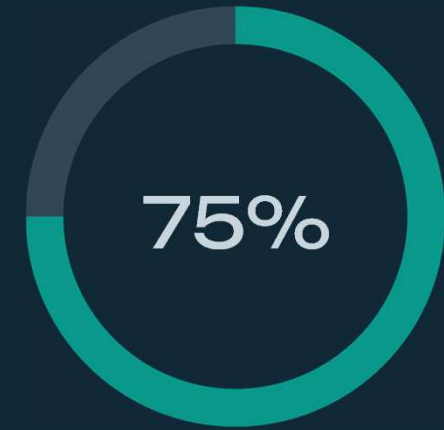
## Outage Reduction Target

Vegetation-related outages per mile reduced through proactive risk identification and prioritized maintenance scheduling



## Cost Efficiency Gain

Cost per mile trimmed versus baseline, achieved through optimized crew routing and risk-based prioritization



## Response Speed Improvement

Reduction in average time from initial report to work order creation through automated processing and validation

## Model Accuracy Tracking

AI risk score correlation with certified arborist assessments, continuously improving through machine learning feedback loops.

## User Engagement Analytics

Number of field reports submitted, crew task completions, and platform logins indicating system adoption and effectiveness.



# Product Roadmap.

## Current: MVP Platform

Fully functional mobile app with risk overlay mapping, basic work order integration, and arborist validation workflows in production.

## Next 6-12 Months

Enhanced offline support for remote areas, customizable work order templates, automated drone data ingestion, and expanded reporting capabilities.

## Future 12-24 Months

Predictive vegetation growth modeling, automated species classification, API integrations with utility OMS platforms, and wildfire risk assessment tools.



# Our Competitive Differentiation



## Affordable Solution

Comprehensive vegetation risk mapping without the prohibitive cost of traditional aerial LiDAR surveys, making advanced analytics accessible to smaller utilities.



## Actionable Intelligence

Work order-ready recommendations rather than generic software that requires additional interpretation, enabling immediate operational response.



## Expert Validation

Certified arborist oversight of all AI recommendations builds utility confidence and ensures regulatory compliance with industry standards.



## Purpose-Built Focus

Specifically designed for cooperatives and municipal utilities with limited resources, understanding their unique operational constraints and budget realities.



# Team & Credibility

## Company Foundation

Veteran-Owned Startup based in Tennessee and Florida, bringing military precision and reliability to utility vegetation management.

## Core Team Expertise

- Product development and utility operations experience
- Certified arborist with 15+ years in vegetation management
- Operations leadership with rural cooperative background
- 20+ years of military space/drone technology development and program management

## Strategic Partnerships





# Looking Ahead



## Pilot Program Expansion

Launch comprehensive pilot programs with rural cooperatives across Tennessee and Florida to demonstrate ROI and refine platform capabilities.



## Strategic Integration

Formalize partnerships with certified arborist networks and drone service providers to create comprehensive vegetation management ecosystem.



## Funding Acceleration

Pursue federal and state funding opportunities to accelerate platform development and support utility adoption across underserved rural markets.



## Platform Evolution

Build comprehensive wildfire prevention and outage resilience platform that transforms how utilities approach vegetation risk management nationwide.





# LineIntel

## Smarter Vegetation & Risk Management

### Pressing Problem

Addresses critical utility challenges: vegetation outages, wildfire liability, and rising maintenance costs affecting system reliability

### Practical Solution

Delivers affordable, AI-powered platform specifically designed for resource-constrained cooperatives and municipal utilities

### Expert Validated

Arborist oversight ensures accuracy and regulatory compliance, building utility confidence in automated recommendations

### Scalable Platform

Positioned for rapid growth through grant funding, pilot programs, and strategic partnerships across the utility sector

Ready to transform vegetation management from reactive maintenance to proactive risk prevention.



# LINEINTEL | Operational Intelligence for the Distribution Grid

Field validated During Tennessee Ice Storm Operations - 2026

## Implementation Timeline?

### 1 Day 1-2: Setup and Launch

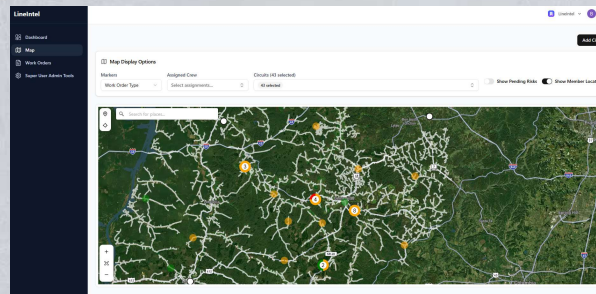
- Upload utility feeder maps, establish user accounts, configure system parameters, and conduct initial staff training sessions.
- Deliver first comprehensive vegetation risk map overlay and roll out mobile app to customers and field crews with support documentation.

### 2 Days 2+: Adoption, Integration, Optimization

- Expanded adoption rate and usage – over 300 work orders and counting
- On-going platform improvements based on user feedback and usage analytics

### 3 Impact

- Report generation with images – FEMA reimbursement
- Efficiency cut days off outages for over 18k customers
- Out of town crews were easily managed – navigating rural TN



Circuit-Level Risk and Work Order Visualization

Priority	ID	Class	Description	Status	Assigned	Created	Scheduled	Actions
High	NC-2025-0145	0-104	3 poles on opposite side of road to remove. Chip break and cut log.	New	bradford@lineintel.com	Feb 25, 2025	Feb 26, 2025	View
High	NC-2025-0144	7-104	Very large branch tree overhead would like us to remove. Thanks to both.	New	paran@lineintel.com	Feb 24, 2025	N/A	View
High	NC-2025-0142	0-104	3 large trees to remove. Clear up all.	New	whitney@lineintel.com	Feb 24, 2025	N/A	View
High	NC-2025-0148	7-104	Two large trees to remove.	New	hollis@lineintel.com	Feb 24, 2025	N/A	View
High	NC-2025-0135	0-104	Identified and tagged tree on top group up area full.	New	paran@lineintel.com	Feb 19, 2025	Feb 19, 2025	View
High	NC-2025-0137	0-104	Transformer bracket loose on the bottom bracket on pole 28570792.	New	hollis@lineintel.com	Feb 17, 2025	Feb 17, 2025	View
High	NC-2025-0140	10-104	Help pick up the Structure # 423191502	New	paran@lineintel.com	Feb 17, 2025	N/A	View
High	NC-2025-0139	0-104	Help pick up the Structure # 423191501	New	paran@lineintel.com	Feb 17, 2025	N/A	View
High	NC-2025-0138	0-104	Help pick up the Structure # 423191504	New	paran@lineintel.com	Feb 17, 2025	N/A	View
High	NC-2025-0137	0-104	Help pick up the Structure # 423191501	New	paran@lineintel.com	Feb 17, 2025	N/A	View
High	NC-2025-0136	10-104	Help pick up the Structure # 423191501	New	paran@lineintel.com	Feb 17, 2025	N/A	View
High	NC-2025-0134	0-104	Help pick up the Structure # 423191502	New	paran@lineintel.com	Feb 17, 2025	N/A	View

Live Work Order Management Dashboard

## Tennessee Ice Storm – February 2026

LineIntel actively deployed and stress tested platform during emergency operations west of Nashville by MLEC.

- Adopted by managers and line crews
- Provided evidence-based work order management/tracking
- Enabled centralized management of dispersed crews
- Noted as a “game changer” by multiple crews – cut time by days

## Strategic Partners



compoze labs



Predict. Prioritize. Prevent.

Schedule a Platform Demonstration  
www.lineintel.com